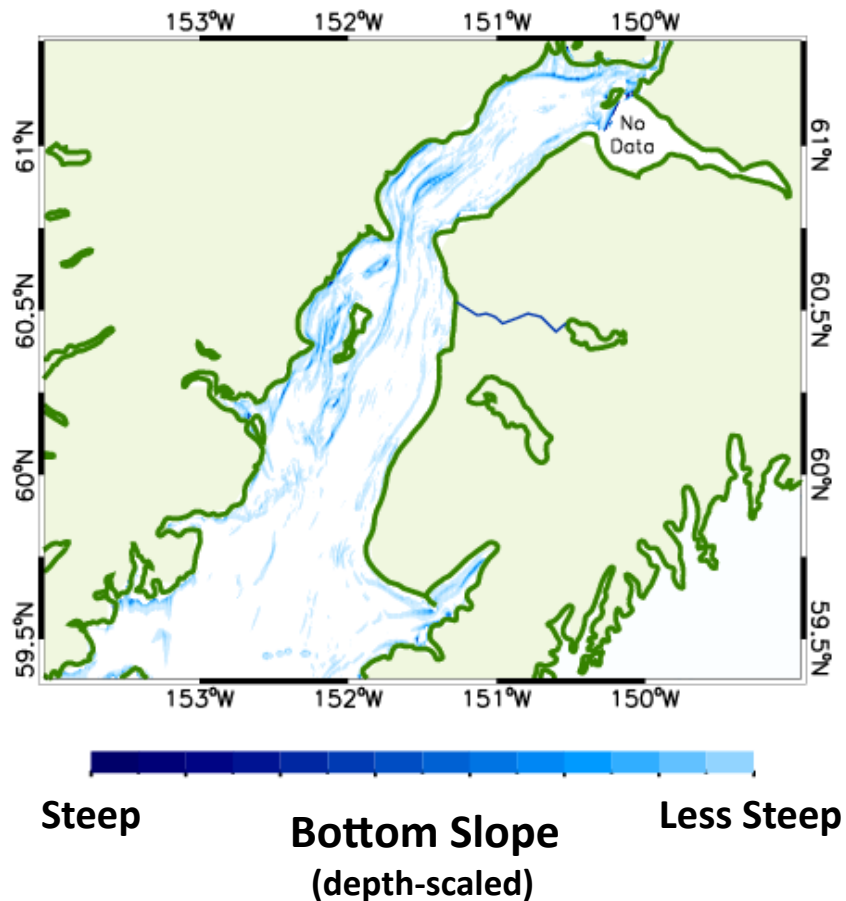


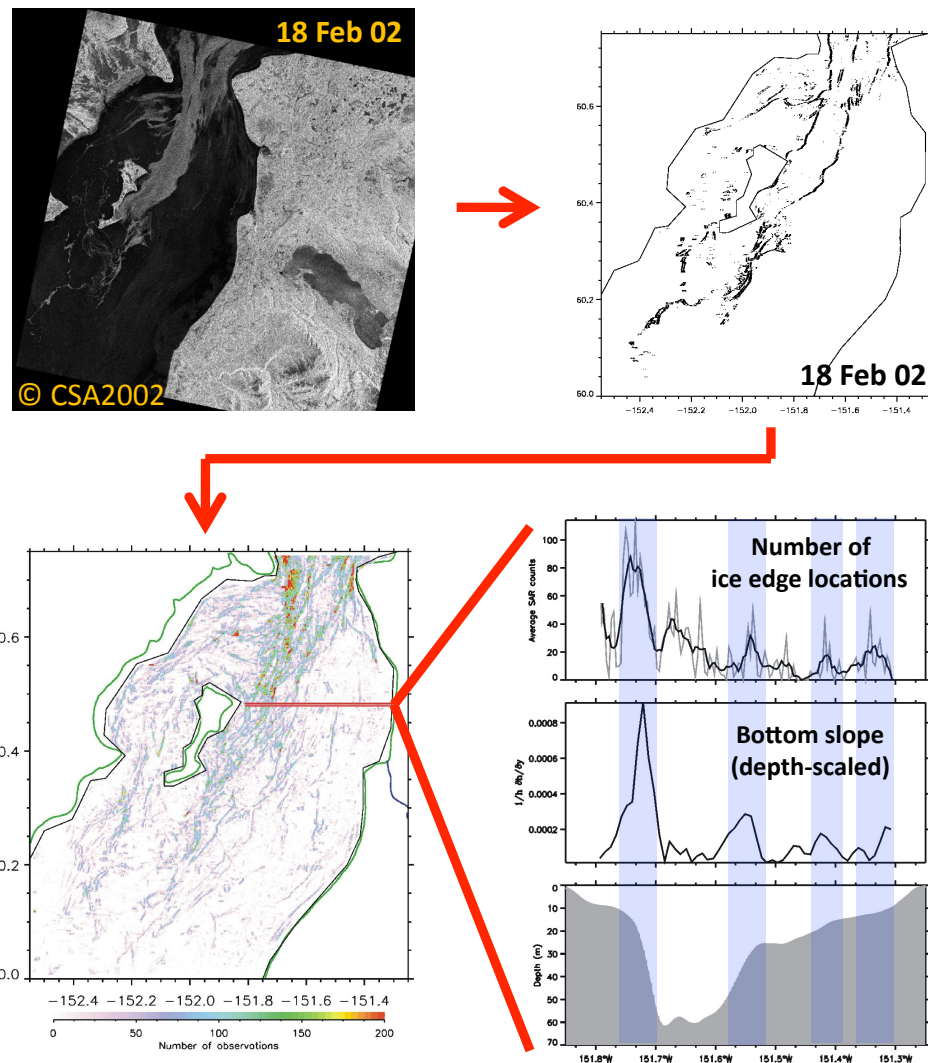
In the absence of wind, spilled oil will tend to collect along convergence zones.

Convergence zones (tide rips, fronts) are often strong where bathymetry is steep.



This relationship can be demonstrated by mapping the edges of free-floating sea ice.

Use a computer program to identify and map ice edge locations from many satellite images.



Convergence zones, as revealed by ice edges, occur where the bottom slope is steep.